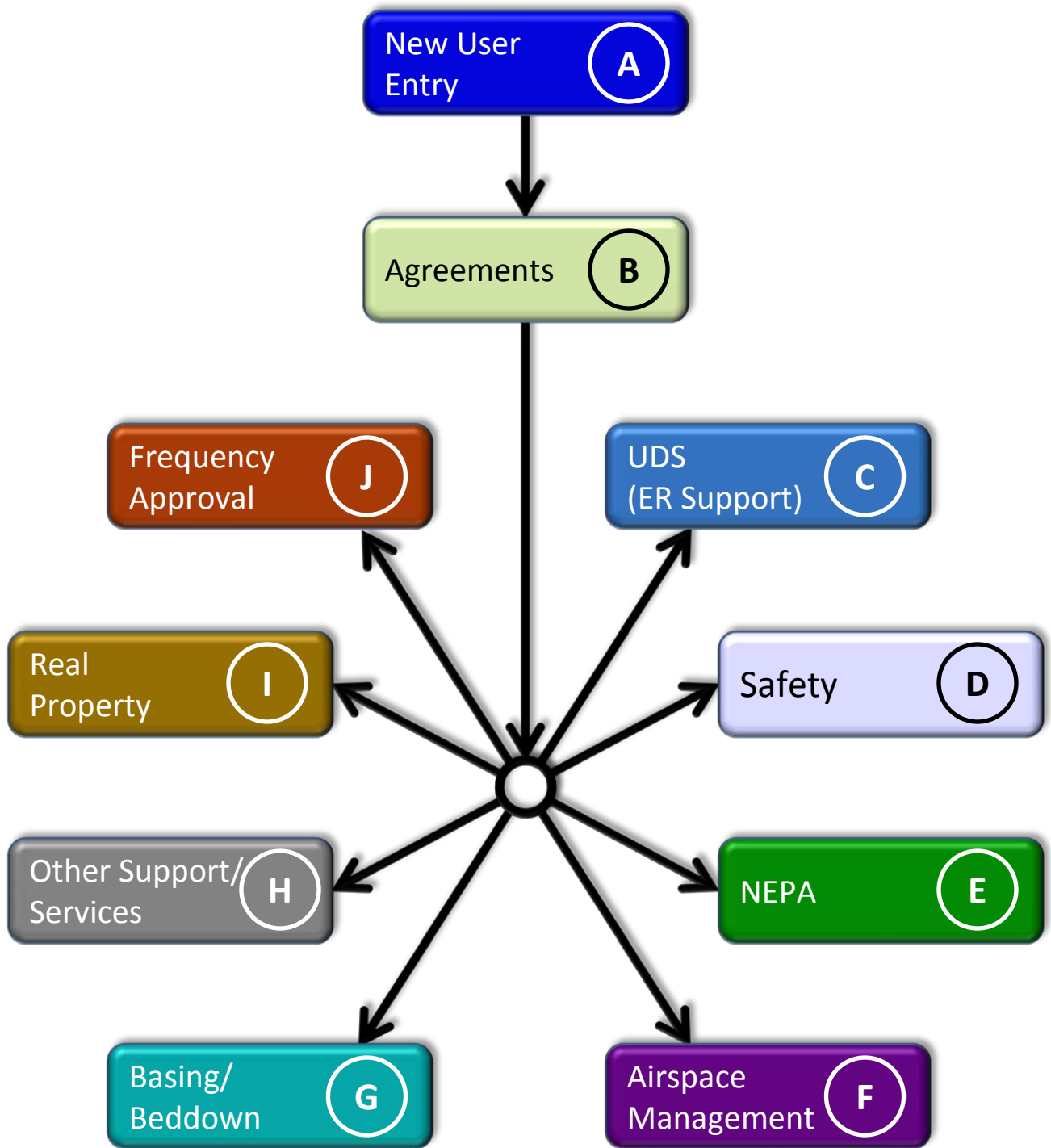
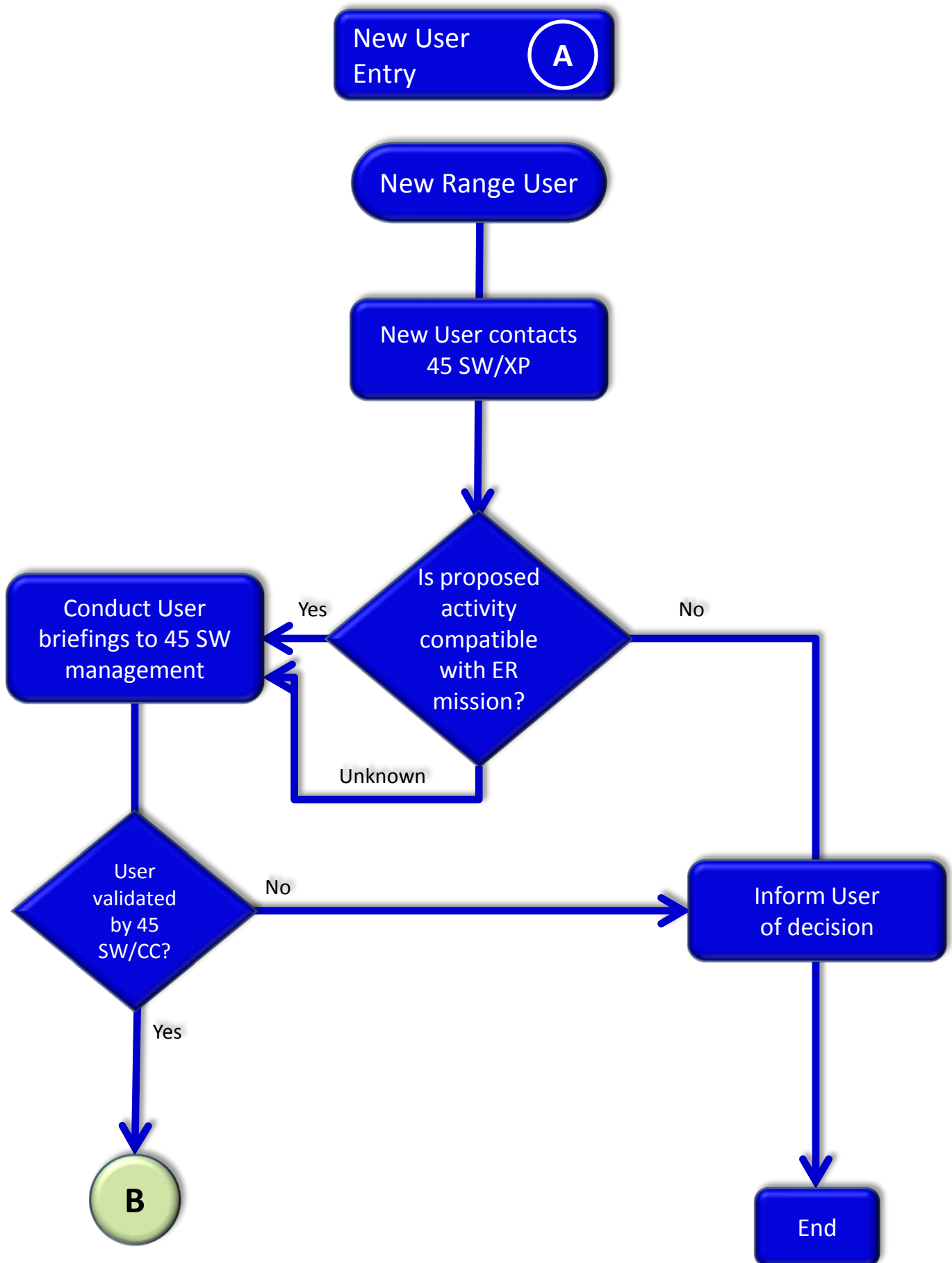


# 45 SW Front Door Process



NOTE: This is a sample representation of 45 SW approval processes. These processes may vary depending on the User and their specific requirements. Some steps shown in this presentation may be skipped or performed in a different order than shown. Additional processes may be required.

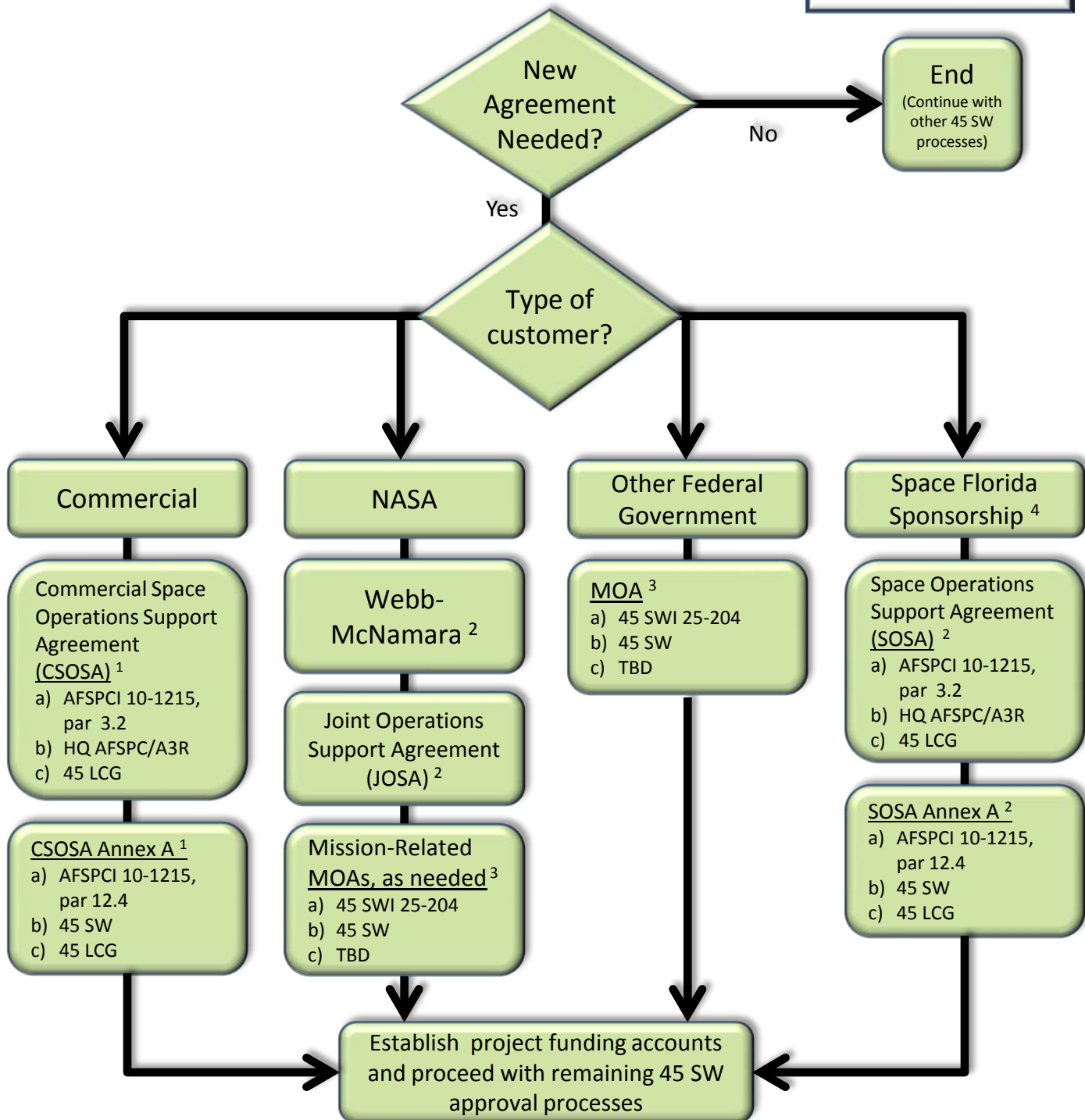


# Agreements

(B)

## Key

- a) AFSPCI/45 SWI ref
- b) Document author
- c) 45 SW POC



<sup>1</sup> Customer can receive temporary support under Initial Support Agreement (ISA) while CSOSA is in process. Customer obtains insurance acceptable to Wing Commander and/or FAA Launch License.

<sup>2</sup> Existing agreements

<sup>3</sup> Memorandum of Agreements (MOAs) can include an exchange of letters or formal agreement.

<sup>4</sup> Customers can choose to be sponsored under the existing Space Florida SOSA/SOSA Annex vs. establishing their own agreements with the 45 SW

UDS <sup>1</sup>  
(ER Support)

c

**Key**

- a) 45 SWI ref
- b) Document author
- c) 45 SW POC

Need  
Range  
Instrumen-  
-tation?

Yes

No

**Program Introduction (PI)**

- a) 45 SWI 99-101, par 4.1
- b) Customer
- c) 45 SW/XP

**Statement of Capability (SC)**

- a) 45 SWI 99-101, par 4.2
- b) 45 SW/XP
- c) 45 SW/XP

Additional  
program  
data  
required? <sup>2</sup>

Additional data not required

C2

<sup>1</sup> Universal Documentation System

<sup>2</sup> Further UDS documentation is not required for programs that do not require range development, or for programs of short duration or minimal support

End

(Continue with  
other 45 SW  
processes)

**C2**

**Key**

- a) 45 SWI ref
- b) Document author
- c) 45 SW POC

**Program Requirements Document (PRD)**

- a) 45 SWI 99-101, par 5.1
- b) Customer
- c) 1 ROPS

**Program Support Plan (PSP)**

- a) 45 SWI 99-101, par 5.2
- b) 1 ROPS
- c) 1 ROPS

**Operations Requirements (OR)**

- a) 45 SWI 99-101, par 6.1
- b) Customer
- c) 1 ROPS

**Operations Directive (OD)**

- a) 45 SWI 99-101, par 6.2
- b) 1 ROPS
- c) 1 ROPS

**End**

(Continue with  
other processes)

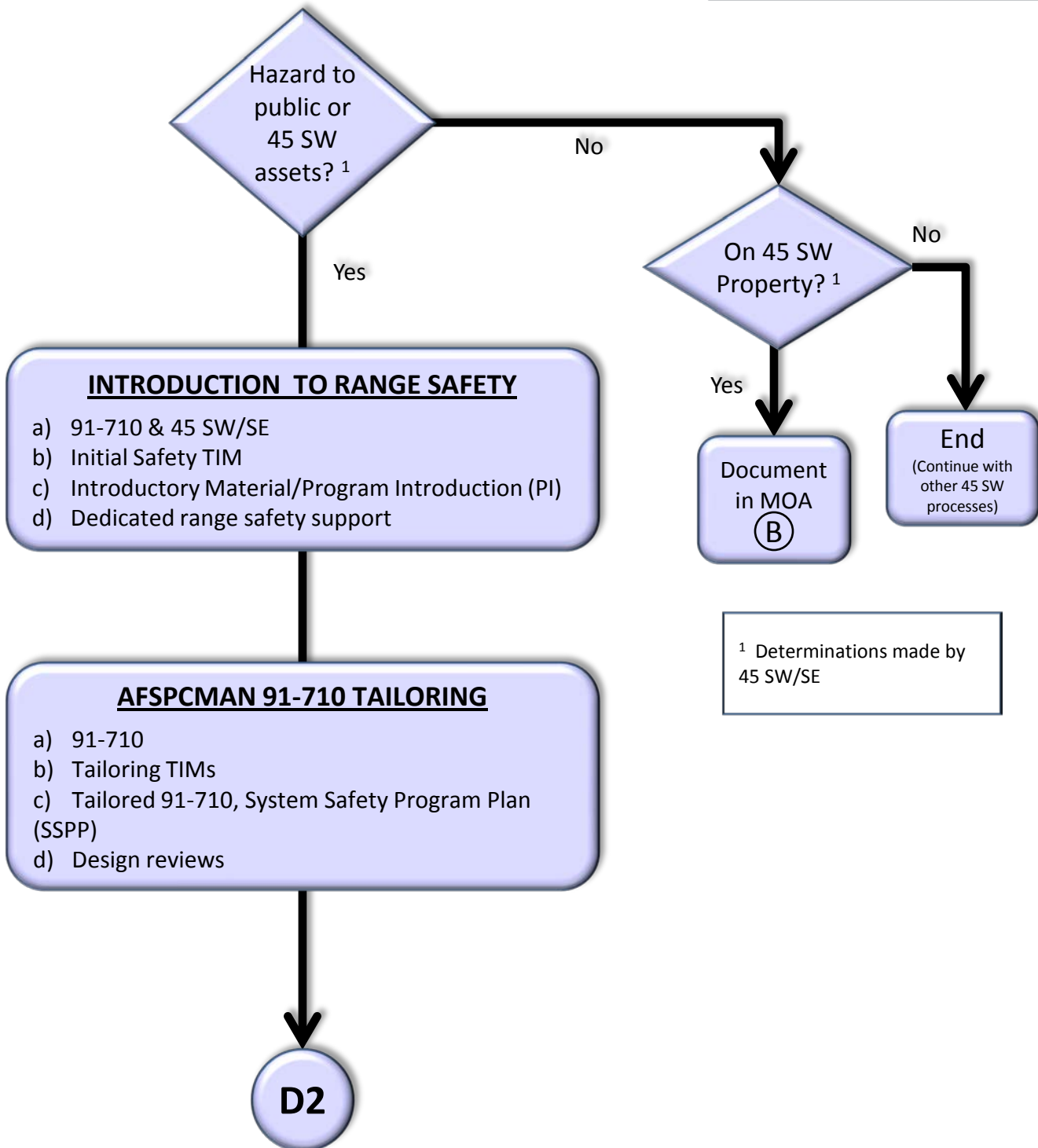
## Safety

(AFSPCMAN 91-710)

D

### Key

- a) 91-710 Vol # & SE POC
- b) Required TIM or activity
- c) Customer Document
- d) Approval Required prior to:



**D2**

**Key**

- a) 91-710 Vol # & SE POC
- b) Required TIM or activity
- c) Customer Document
- d) Approval Required prior to:

**FLIGHT AND RISK ANALYSIS**

- a) 91-710 Vol 2 [T] & 45 SW/SEL
- b) Flight analysis TIMs
- c) Preliminary Flight Data Plan (PFDP), Final Flight Data Plan (FFDP), Intended Support Plan (ISP), Directed Energy Plans (DEP)
- d) Design reviews

Is FSS  
Required?

Required if analysis  
shows powered stages  
and/or payload or  
resulting hazards can  
reach the public.

**AIRBORNE FSS DESIGN & TESTS  
(If FSS Required)**

- a) 91-710 Vol 4 [T] & 45 SW/SEA
- b) Conceptual Design Review (cDR), Preliminary Design Review (PDR), Critical Design Review (CDR)
- c) Flight Termination System Report (FTSR)

**FACILITY DESIGN & TESTS**

- a) 91-710 Vol 5 [T] & 45 SW/SEA
- b) Non-compliance TIMs
- c) Non-compliance requests
- d) Design reviews

Explosive Site Plan

**RANGE SAFETY APPROVAL  
FOR LAUNCH OPERATIONS**

- a) 91-710 Vol 6 [T] & 45 SW/SEL
- b) Launch Readiness Review (LRR)
- c) Launch Operations Approval Request
- d) Start countdown operations

**LAUNCH VEHICLE, PAYLOAD, GSE  
DESIGN AND TEST**

- a) 91-710 Vol 3 [T] & 45 SW/SEA
- b) Conceptual Design Review (cDR), Preliminary Design Review (PDR), Critical Design Review (CDR)
- c) Missile System Prelaunch Safety Package (MSPSP)
- d) Hardware shipment to range

**OPERATIONS & TESTS**

- a) 91-710 Vol 6 [T] & 45 SW/SEL
- b) CDR, procedures, TIMs
- c) Ground Operations Plan (GOP), Hazardous and Safety Critical Procedures
- d) Use of procedures on Eastern Range

**SAFETY CRITICAL LAUNCH PREP  
OPERATIONS**

- a) 91-710 Vol 6 [T] & 45 SW/SEA
- b) Countdown
- c) Range User Procedures
- d) Final Range Safety Clear to Launch

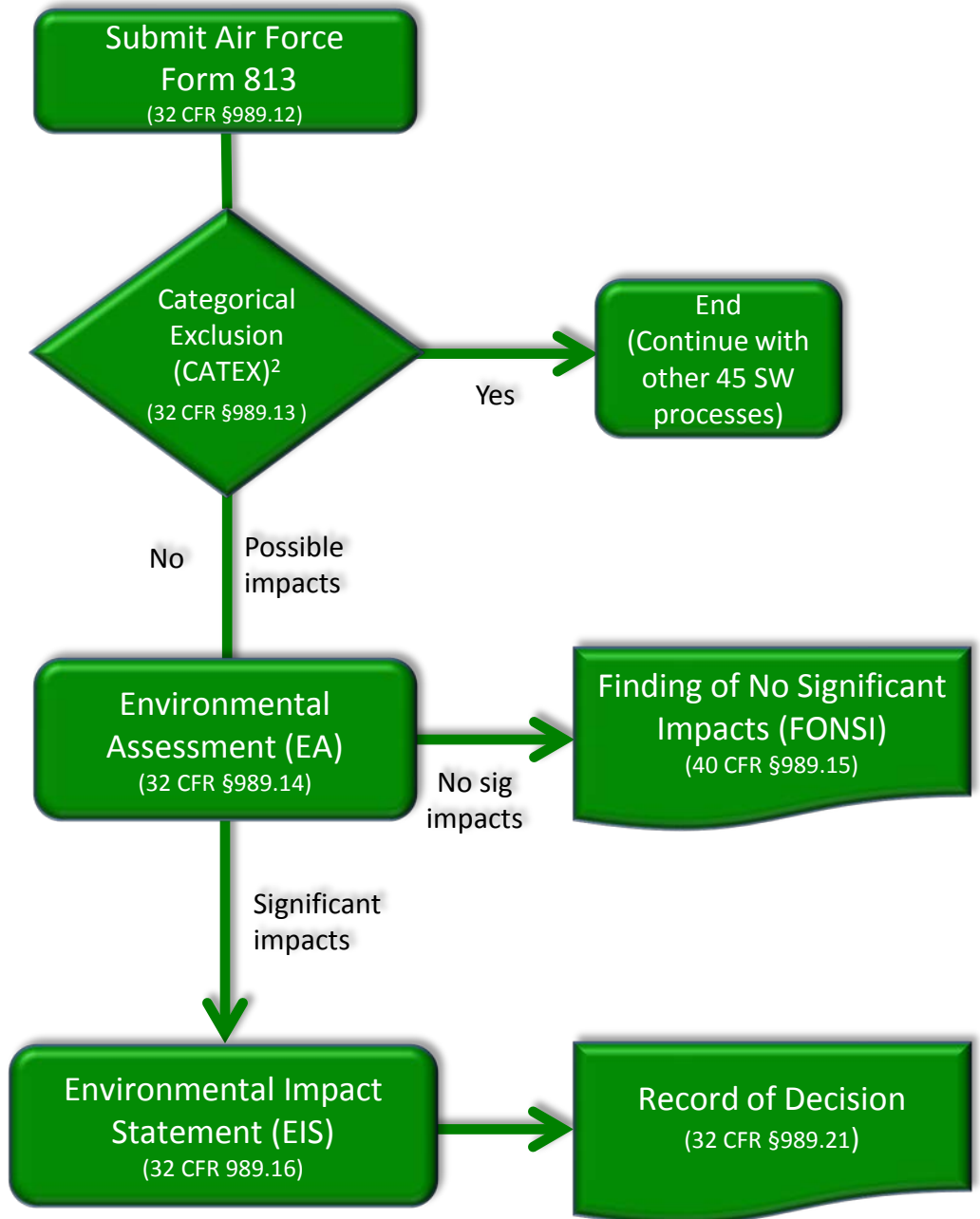
**Launch**

**NON-COMPLIANCE RESOLUTION**

- a) 91-710 Vol 1 [T] & 45 SW/SE
- b) Non-compliance TIMs
- c) Non-compliance requests
- d) Design reviews

NEPA <sup>1</sup>  
(32 CFR 989)

E



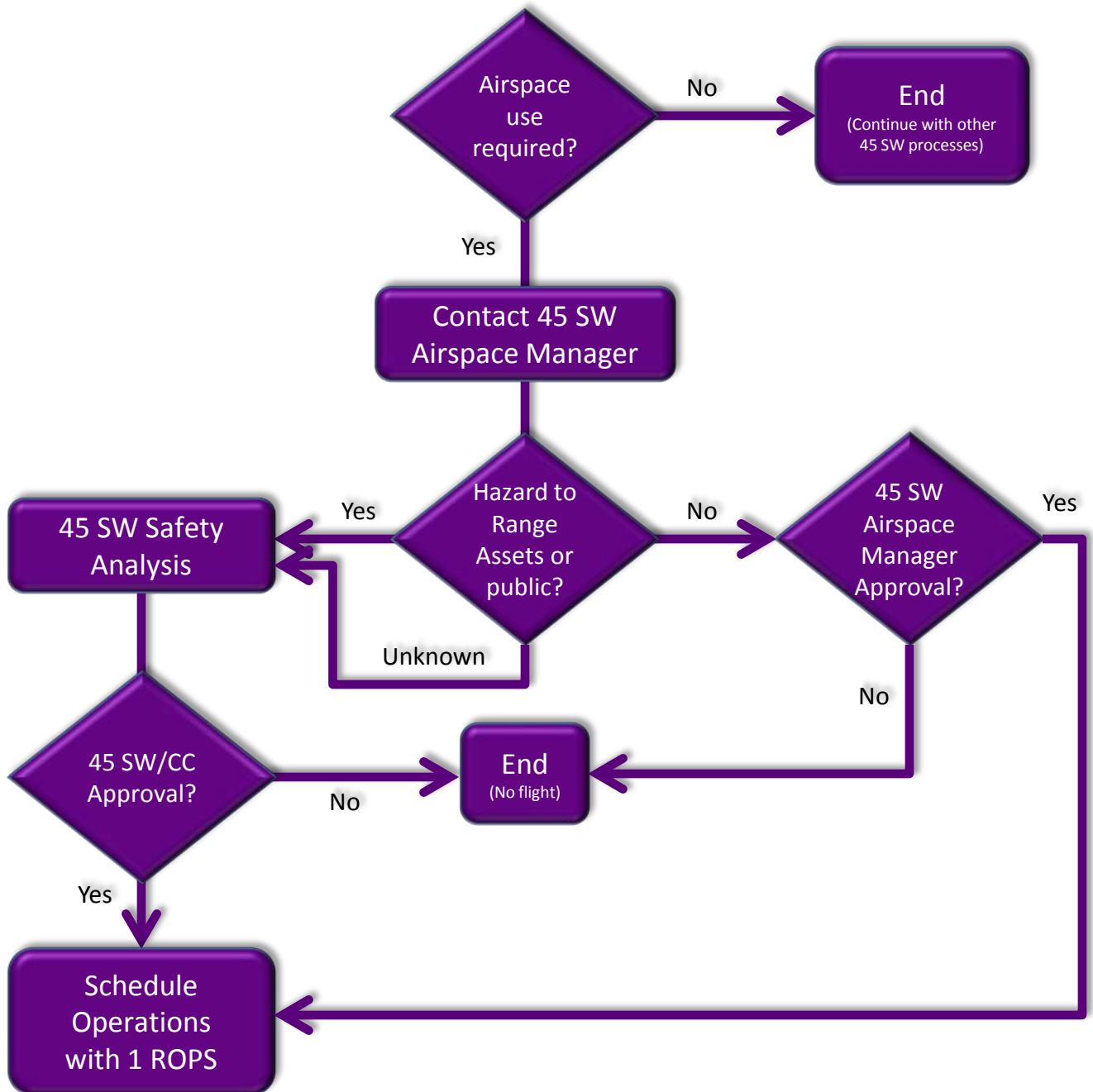
<sup>1</sup> NEPA - National Environmental Protection Act

<sup>2</sup> New range user actions on Space Florida leased/licensed facilities falling within the vehicle performance criteria assessed under existing programmatic environmental reviews may qualify for Categorical Exclusion.



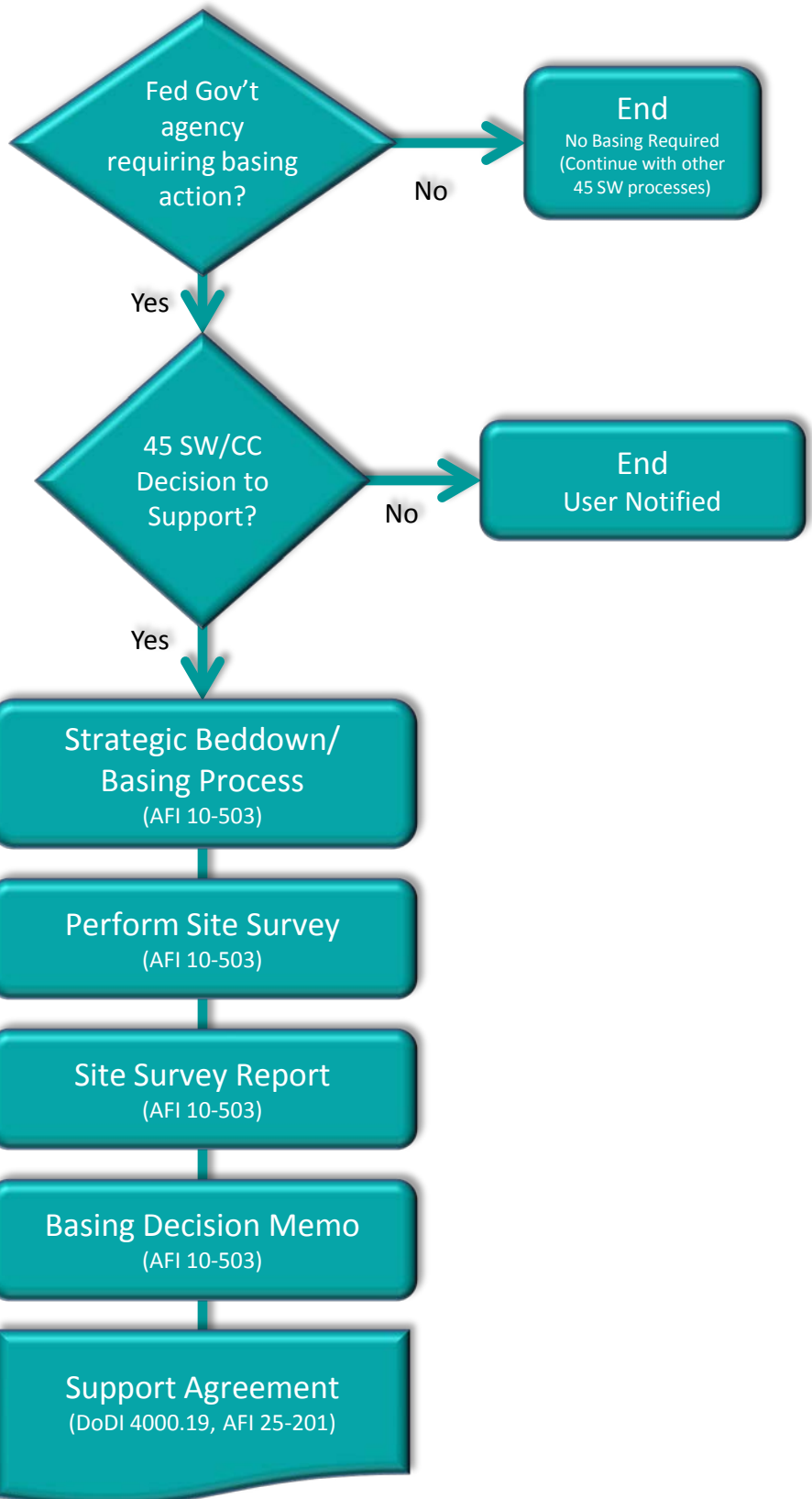
# Airspace Management

F

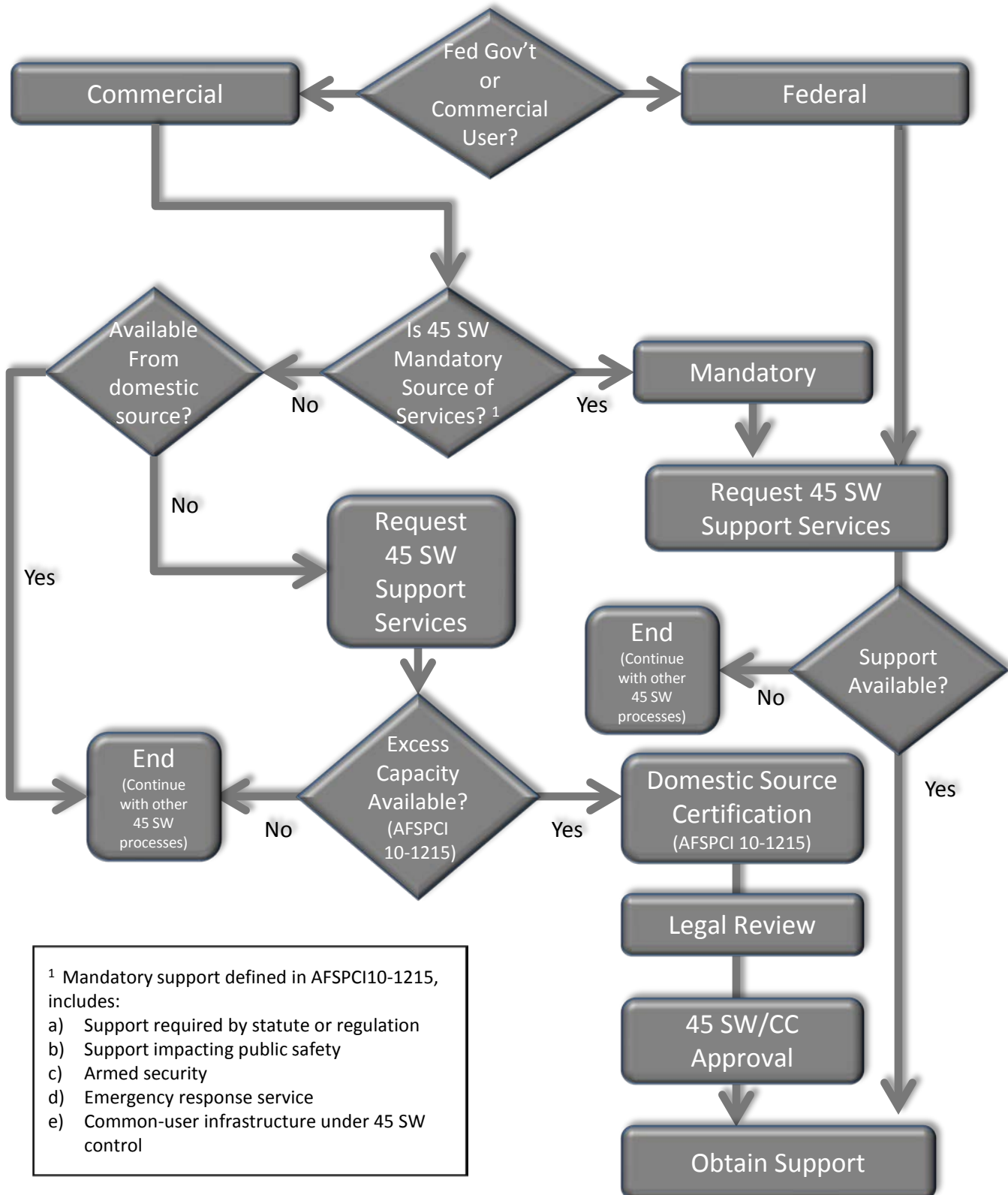


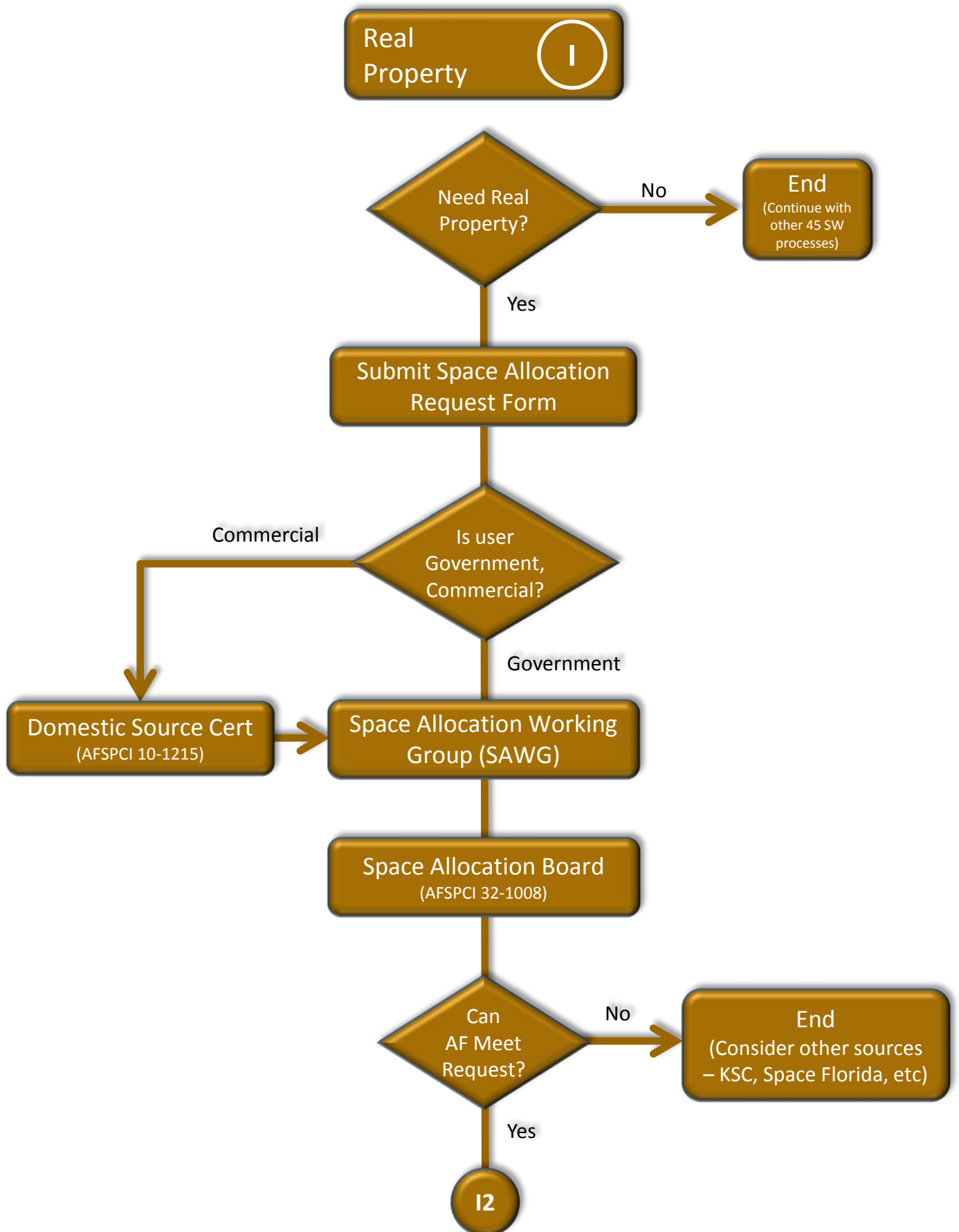
# Basing/ Beddown

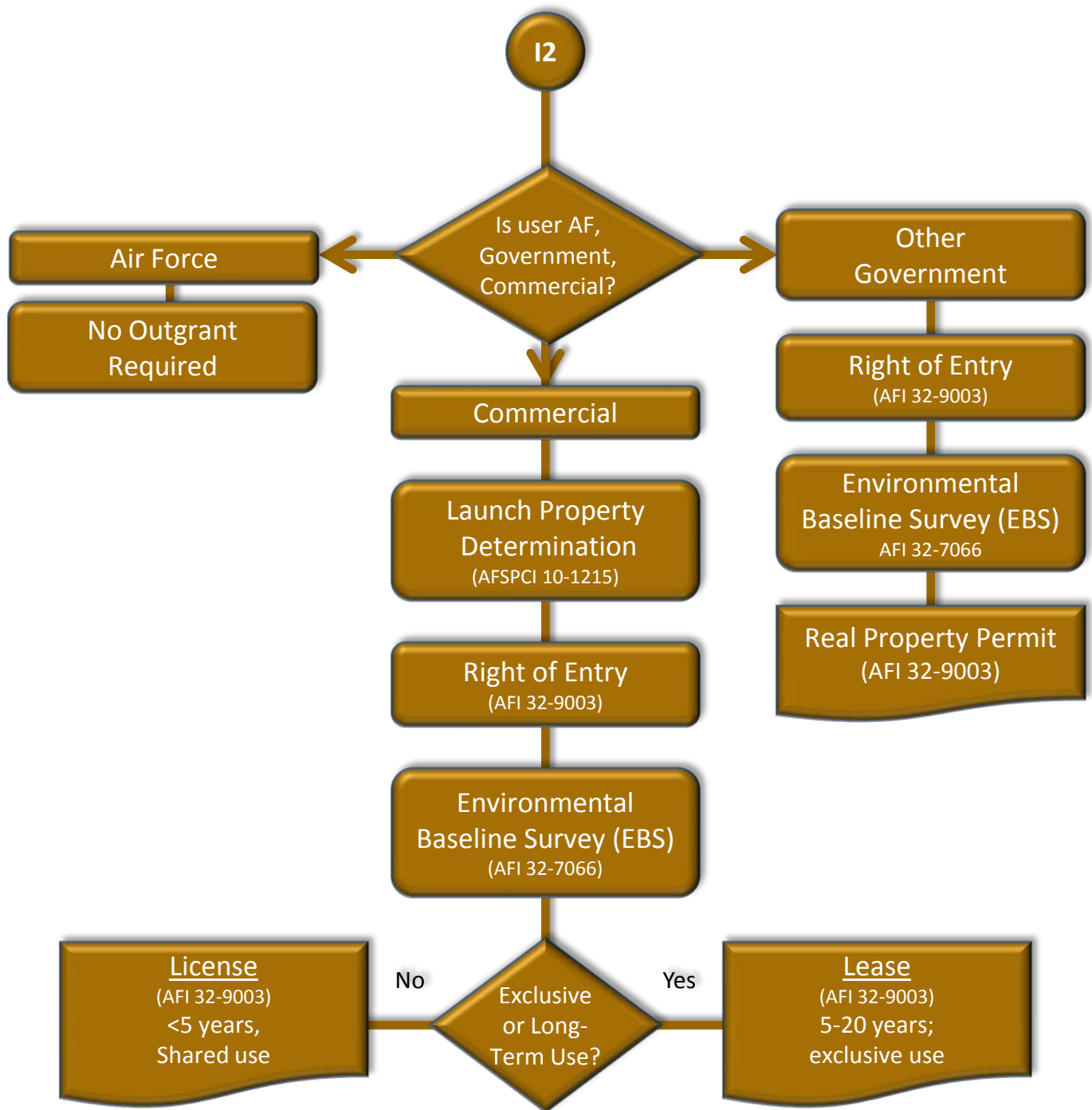
G



# Other Support/ Services (H)







# Frequency Approval

J

