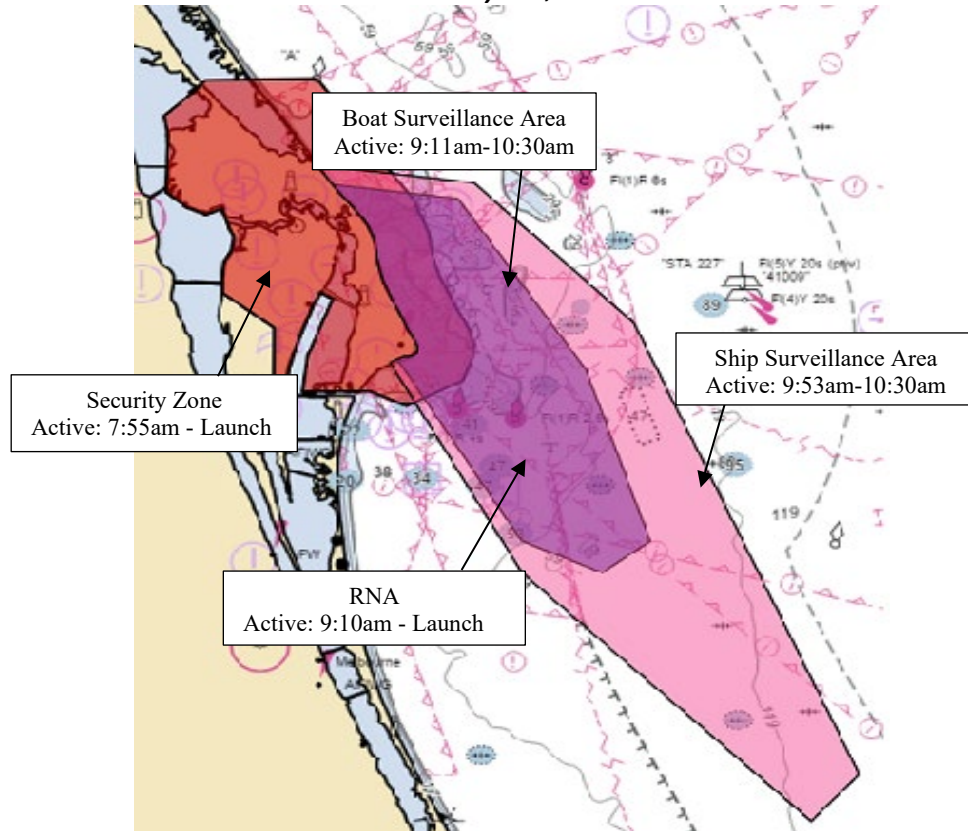




# UNITED STATES COAST GUARD SECTOR JACKSONVILLE SPACE LAUNCH DELTA 45



## Space Operations Rocket Launch Advisory Falcon 9 Transporter-6 January 03, 2023



### WARNING

#### RNA/Security Zone

Any person or vessel requesting to enter, pass through or remain in the RNA shall request authorization from the Captain of the under the authority of 33 CFR 160.111 and Title 46, United States Code (USC), Parts 70002 and 70036. No person or vessel may enter the Security Zone. Failure to comply is punishable by a fine of not more than \$250,000 or imprisonment for not more than six years, or both.

#### Surveillance Area

Extremely hazardous conditions will be present within the surveillance areas. Mariners are strongly advised to avoid these areas while active.

### For up to date Launch Information:

1. Scan the QR Code or copy link
2. Go to Upcoming Launches near the bottom of the page
3. Open Launch Hazard Area

<https://www.uscg.mil/eforce.mil/>



USCG Command Center Jacksonville: (904) 714-7557

USSF Launch Information Recorded Line: 1-800-470-7232

**Mariners are advised to remain clear of all zones during the time of activation**

Detailed Launch Information can be obtained using Coast Guard channel 16 or FM81A and Notice to Mariners @

<https://www.navcen.uscg.gov/?pageName=lnmDistrict&region=7>



UNITED STATES COAST GUARD SECTOR JACKSONVILLE  
SPACE LAUNCH DELTA 45



**Launch Zone Coordinates**

<b>Boat Surveillance Area</b>	
Latitude (dms)	Longitude (dms)
28° 37' 52.40" N	80° 36' 51.40" W
28° 37' 0.00" N	80° 29' 0.00" W
28° 26' 0.00" N	80° 21' 0.00" W
28° 15' 0.00" N	80° 17' 0.00" W
28° 13' 0.00" N	80° 20' 0.00" W
28° 15' 0.00" N	80° 25' 0.00" W
28° 26' 40.77" N	80° 32' 47.14" W

<b>Ship Surveillance area</b>	
Latitude (dms)	Longitude (dms)
28° 39' 6.40" N	80° 37' 45.59" W
28° 38' 0.00" N	80° 28' 0.00" W
28° 29' 0.00" N	80° 18' 0.00" W
28° 0' 0.00" N	80° 4' 0.00" W
27° 57' 0.00" N	80° 7' 0.00" W
28° 13' 0.00" N	80° 25' 0.00" W
28° 26' 28.96" N	80° 33' 14.64" W

<b>Regulated Navigation Area</b>	
Latitude (dms)	Longitude (dms)
28° 37' 52.40" N	80° 36' 51.40" W
28° 37' 0.00" N	80° 29' 0.00" W
28° 26' 0.00" N	80° 21' 0.00" W
28° 15' 0.00" N	80° 17' 0.00" W
28° 13' 0.00" N	80° 20' 0.00" W
28° 15' 0.00" N	80° 25' 0.00" W
28° 26' 40.77" N	80° 32' 47.14" W

**Security Zone:**

A detailed description of the Security Zone can be found in 33 Code of Federal Regulations (CFR) 165.701 or online at:  
[eCFR :: 33 CFR Part 165 -- Regulated Navigation Areas and Limited Access Areas](https://www.ecfr.gov/current/title-33/chapter-I/subchapter-B/part-165)