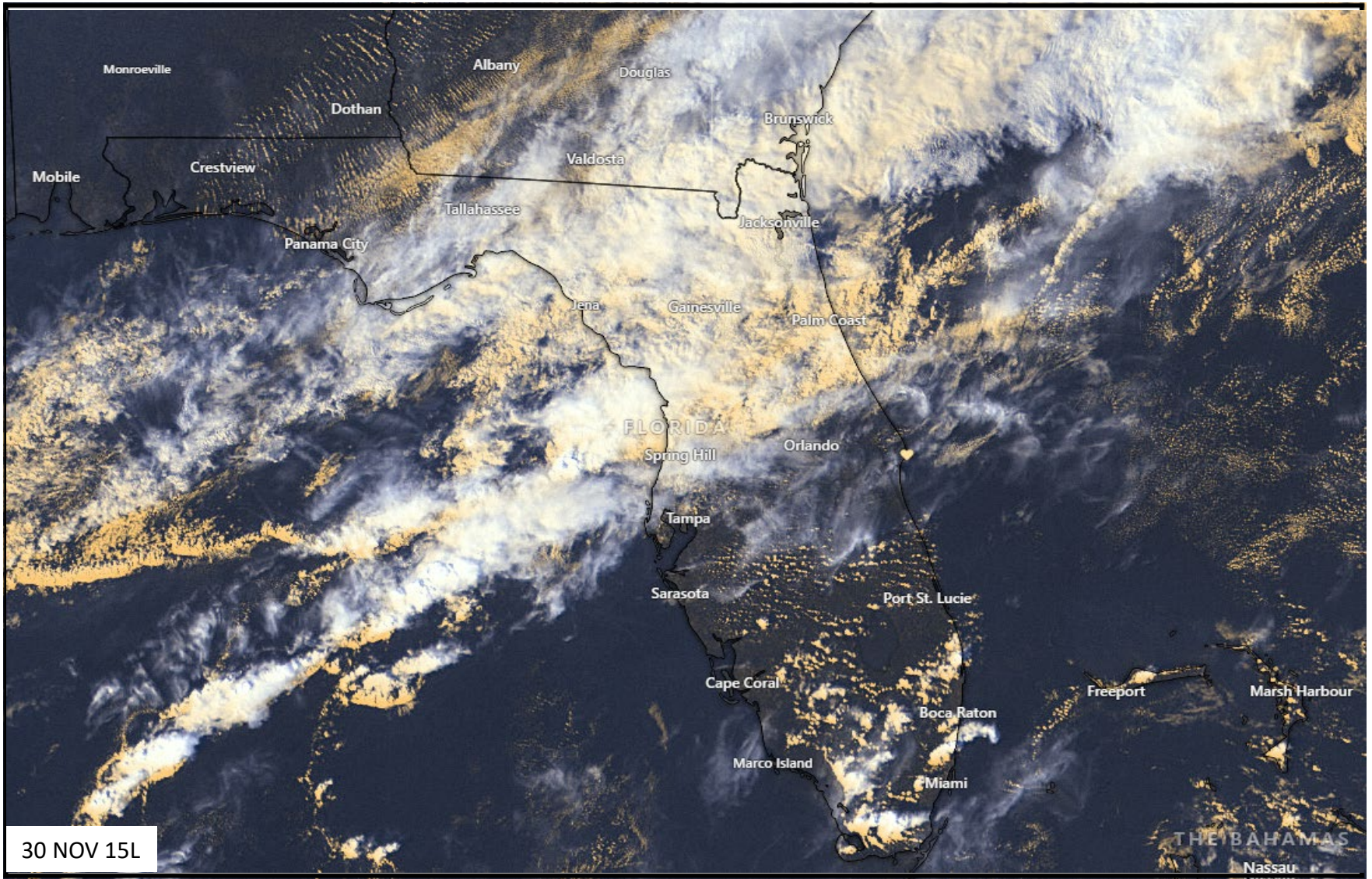




30 NOV 2022 VALID: 1600L – 2400L

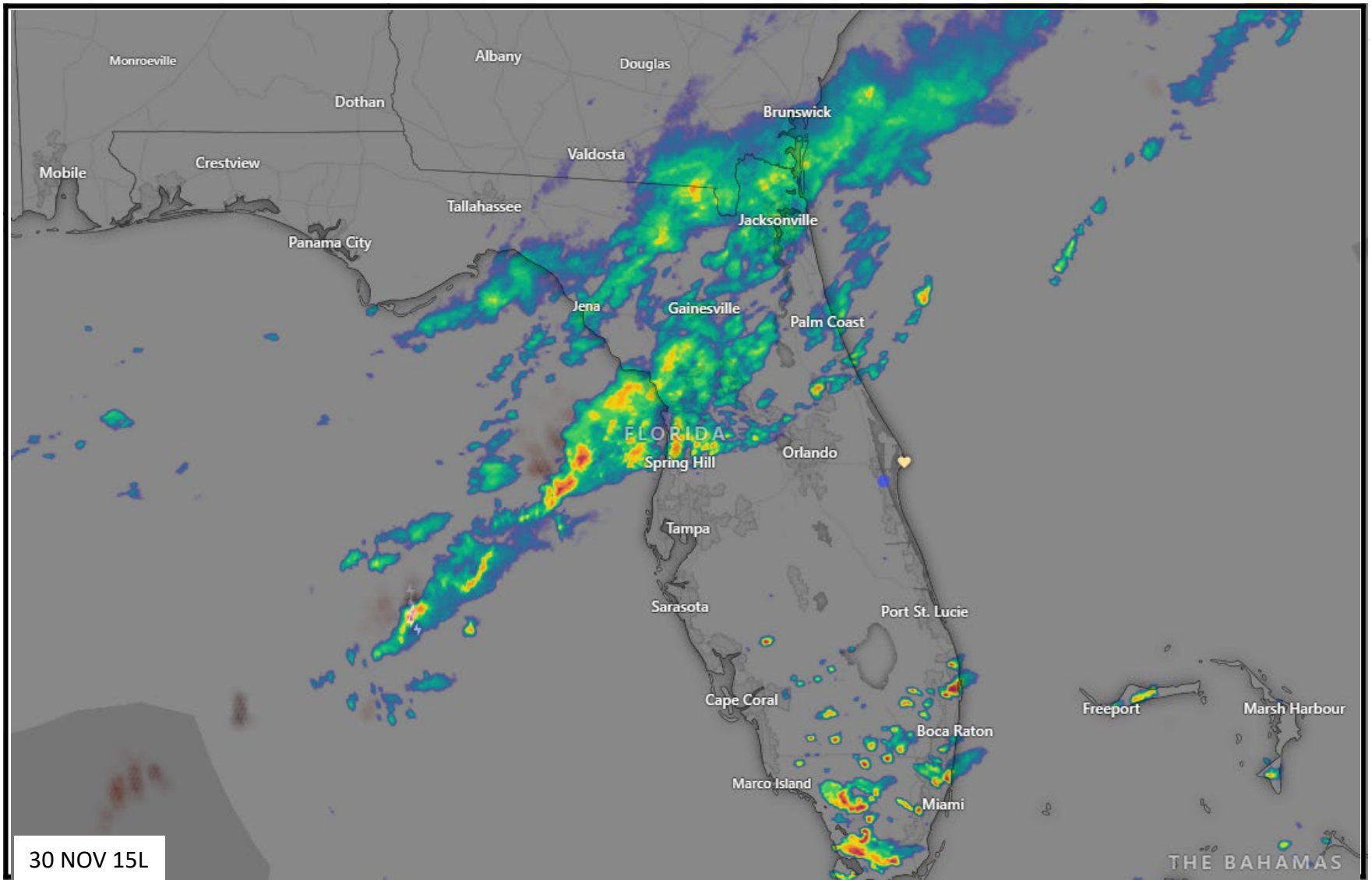
SATELLITE



30 NOV 15L



RADAR



30 NOV 15L

THE BAHAMAS



AIRFIELD DATA (PSFB)

TIME (L)	WINDS (KT/M)	VIS (SM)	WEATHER	SKY COND	TEMP (C)	ALSTG (INS)	PA (FT)
16-17	27009	9999	NSW	SCT040	+25	30.07	-131
17-18	27009	9999	NSW	SCT040	+23	30.08	-140
18-19	27009	9999	NSW	SCT040	+23	30.10	-158
19-20	35010G15	9999	NSW	BKN020	+23	30.12	-177
20-21	35010G15	9999	NSW	BKN020	+23	30.13	-186
21-22	35010G15	9999	NSW	BKN020	+23	30.13	-186
22-23	35010G15	9999	NSW	BKN020	+23	30.15	-204
23-24	35010G15	9999	NSW	BKN020	+22	30.17	-223




WWAs: ADVISORY / WATCH / WARNING

NO CURRENT WWAs

ALTERNATE CRITERIA

 **≥ 007 / 1/2SM**  **< 007 / < 1/2SM**

 **≥ 30 KTS**

KMLB 09/27 	KMLB 301740Z 3018/0118 24006KT P6SM SCT035 BKN250 FM302000 10008KT P6SM SCT050 SCT250 FM010000 13004KT P6SM FEW030 FM010600 30004KT P6SM OVC250 FM010900 34006KT P6SM OVC050 FM011100 01009KT P6SM OVC025 FM011500 02014G21KT P6SM VCSH BKN025	KTIX 18/36 	KTIX 301740Z 3018/0118 23008KT P6SM SCT035 BKN250 FM302000 08008KT P6SM SCT050 SCT250 FM010000 VRB03KT P6SM FEW030 SCT050 SCT250 FM010600 32004KT P6SM BKN050 FM010900 36007KT P6SM OVC015 FM011500 02014G21KT P6SM BKN025
KSFB 09/27 	KSFB 301928Z 3019/0118 27010KT P6SM FEW040 BKN250 FM302000 29009KT P6SM VCSH SCT050 BKN080 TEMPO 3020/3022 VRB15G20KT 5SM SHRA SCT030 BKN050 FM010000 VRB03KT P6SM FEW030 SCT250 FM010700 36008KT P6SM SCT008 OVC015 FM011200 01010KT P6SM OVC020		

